



QUIETKAT EV BIKE SYSTEM P/N: QKBCSY001



WARNING

- HIGH CURRENT interconnects must be properly terminated. Poor crimp quality can cause heat build-up and fire. Follow crimp connector manufacturer instructions.
- Do NOT use system to disconnect headlights, brake lights or other safety equipment.
- Unit may become hot to touch during normal operation.
- Failure to properly install connectors, fuses or wiring may cause vehicle failure or fire.
- Installer must determine vehicle wiring configuration and proper integration of system.
- Use proper wire gauge. All power wires connecting to positive (+) or negative (-) battery terminal or local chassis ground (-) must be sized to supply at least 125% of max. current and properly fused at power source.
- Install protective grommets when routing wire through or metal.

NOTICE:



Installers and users must comply with all applicable federal, state and local laws regarding use and installation of warning devices. Improper use or installation may void warranty coverage. To review our Limited Warranty Statement & Return Policy for this or any SoundOff Signal product, visit our website at www.soundoffsignal.com/tech-services/returns/. If you have questions regarding this product, contact **Technical Services**, Monday - Friday, 8 a.m. to 5 p.m. ET at 1.800.338.7337 (press #4). Questions or comments that do not require immediate attention may be emailed to techservices@soundoffsignal.com.

TABLE OF CONTENTS

REQUIRED TOOLS	1
CONTENTS OF KIT	1 - 4
DRILL TEMPLATE	5
INSTALLATION STEPS	6 - 12
SERVICE PARTS	13
WARRANTY	14

NOTICE:

Installers and users must comply with all applicable federal, state and local laws regarding use and installation of warning devices. Improper use or installation may void warranty coverage. To review our Limited Warranty Statement & Return Policy for this or any SoundOff Signal product, visit our website at www.soundoffsignal.com/tech-services/returns/. If you have questions regarding this product, contact **Technical Services**, Monday - Friday, 8 a.m. to 5 p.m. ET at 1.800.338.7337 (press #4). Questions or comments that do not require immediate attention may be emailed to techservices@soundoffsignal.com.



REQUIRED TOOLS:

- TESA TAPE (TO WRAP THE WIRES)
- RATCHET
- 8MM SOCKET (FOR MPOWER LIGHTS)
- 10MM SOCKET AND EXTENSION (NUTS)
- 1/2" SOCKET (FOR FRONT MOUNT NUTS)
- RIVET GUN
- T-30 TORX SOCKET AND EXTENSION (BOLTS)
- T-25 TORX FOR HPS BRACKET MOUNTING
- 3/32" ALLEN FOR HPS LIGHT MOUNTING
- 3MM ALLEN (TO REMOVE 48V BATTERY MOUNT)
- POWER DRILL
- 3/4" HOLE SAW (FOR SWITCH AND GROMMET)
- 5/16" DRILL BIT (FOR PLASTIC BOX HOLES)

QKBCSY001



CONTENTS

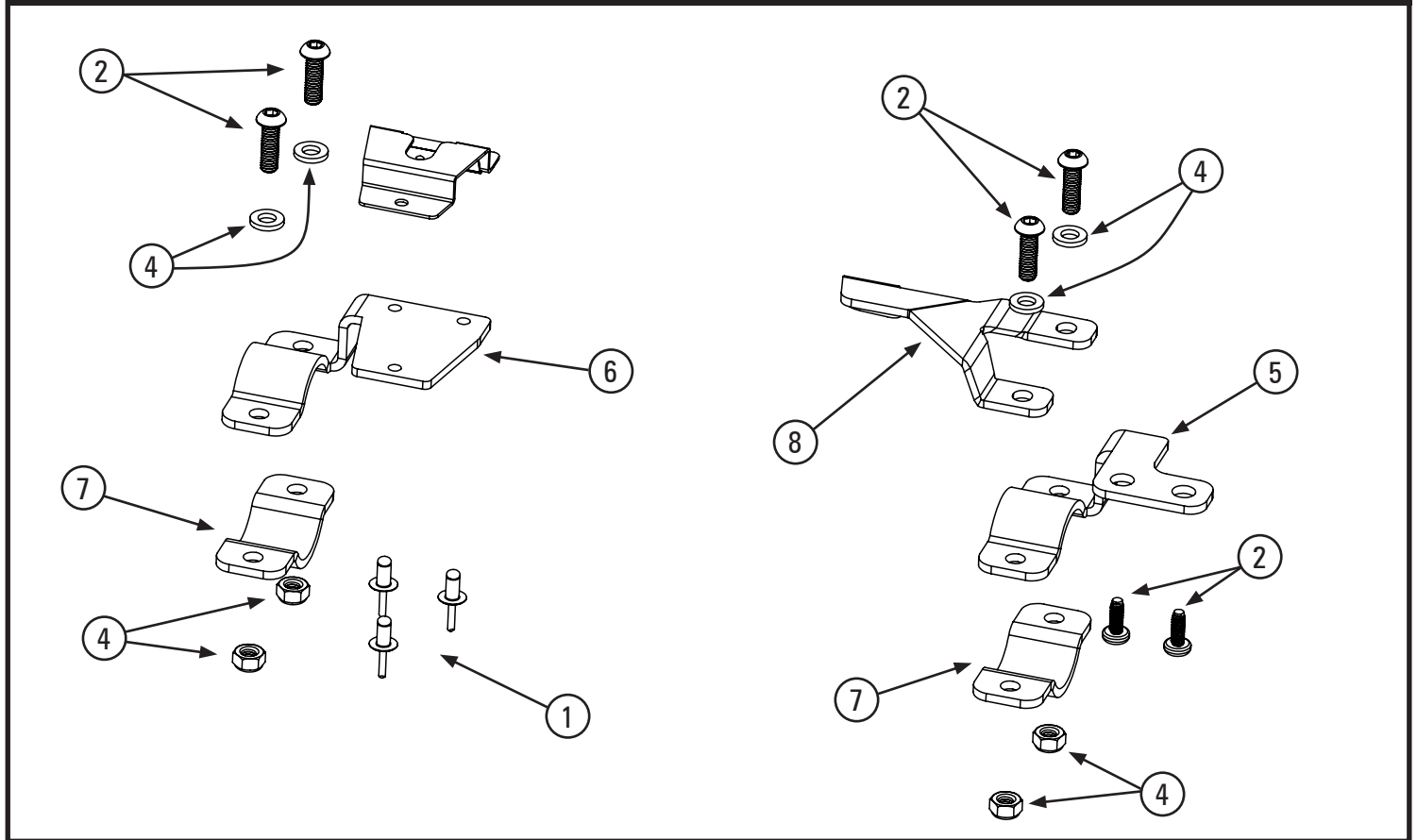
#	QTY	COMPONENT
1	1	30 WATT SIREN SPEAKER
2	1	POWER CONVERTOR 48 VDC - 12 VDC
3	1	MAIN VEHICLE HARNESS
4	1	48V POWER HARNESS
5	1	LABEL QUIETKAT I-SHEET QR CARD
6	1	MICROPHONE
7	1	HANDLEBAR MOUNT KIT
8	1	BIKE FRONT MOUNT KIT
9	1	REAR/SIDE MOUNT KIT
10	1	5 BUTTON CONTROLLER
11	1	HIGH POWER SPOT LIGHT
12	2	4" FASCIA LEFT R/B/W- (QKMPS2001-8)
13	2	4" FASCIA RIGHT R/B/W - (QKMPS2002-8)
14	1	4" FASCIA REAR R/B/W - (QKMPS2003-8)

NOTICE:

Installers and users must comply with all applicable federal, state and local laws regarding use and installation of warning devices. Improper use or installation may void warranty coverage. To review our Limited Warranty Statement & Return Policy for this or any SoundOff Signal product, visit our website at www.soundoffsignal.com/tech-services/returns/. If you have questions regarding this product, contact **Technical Services**, Monday - Friday, 8 a.m. to 5 p.m. ET at **1.800.338.7337** (press #4). Questions or comments that do not require immediate attention may be emailed to techservices@soundoffsignal.com.



QKBCBK001 - HANDLEBAR MOUNT KIT



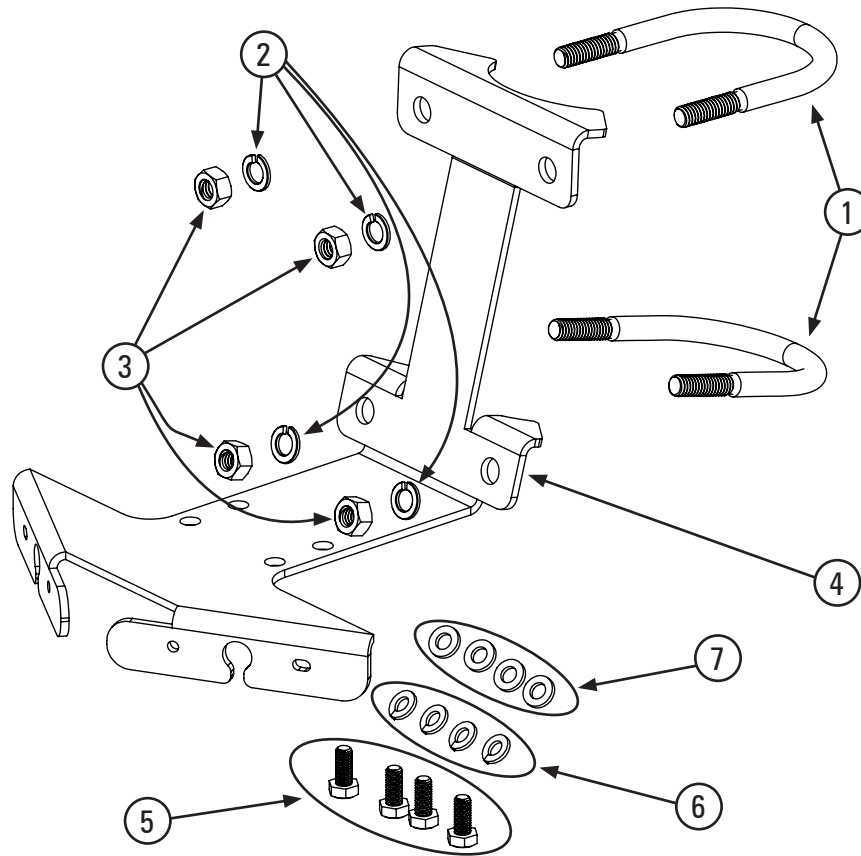
CONTENTS

#	QTY	COMPONENT
1	3	3/16" DIA X .375" ALUMINUM RIVETS
2	4	SCREW, M6 X 1.0, 20MM LONG
3	4	M6 FLAT WASHER
4	4	M6 NYLOCK NUT
5	1	RIGHT HANDLEBAR HPS MOUNT BRACKET
6	1	LEFT HANDLEBAR MIC MOUNT BRACKET
7	2	LEFT AND RIGHT HANDLEBAR MOUNT BACK PLATES
8	1	5 BUTTON CONTROLLER HANDLEBAR MOUNT BRACKET

NOTICE:

Installers and users must comply with all applicable federal, state and local laws regarding use and installation of warning devices. Improper use or installation may void warranty coverage. To review our Limited Warranty Statement & Return Policy for this or any SoundOff Signal product, visit our website at www.soundoffsignal.com/tech-services/returns/. If you have questions regarding this product, contact **Technical Services**, Monday - Friday, 8 a.m. to 5 p.m. ET at 1.800.338.7337 (press #4). Questions or comments that do not require immediate attention may be emailed to techservices@soundoffsignal.com.

QKBCBK002 - SPEAKER MOUNT KIT



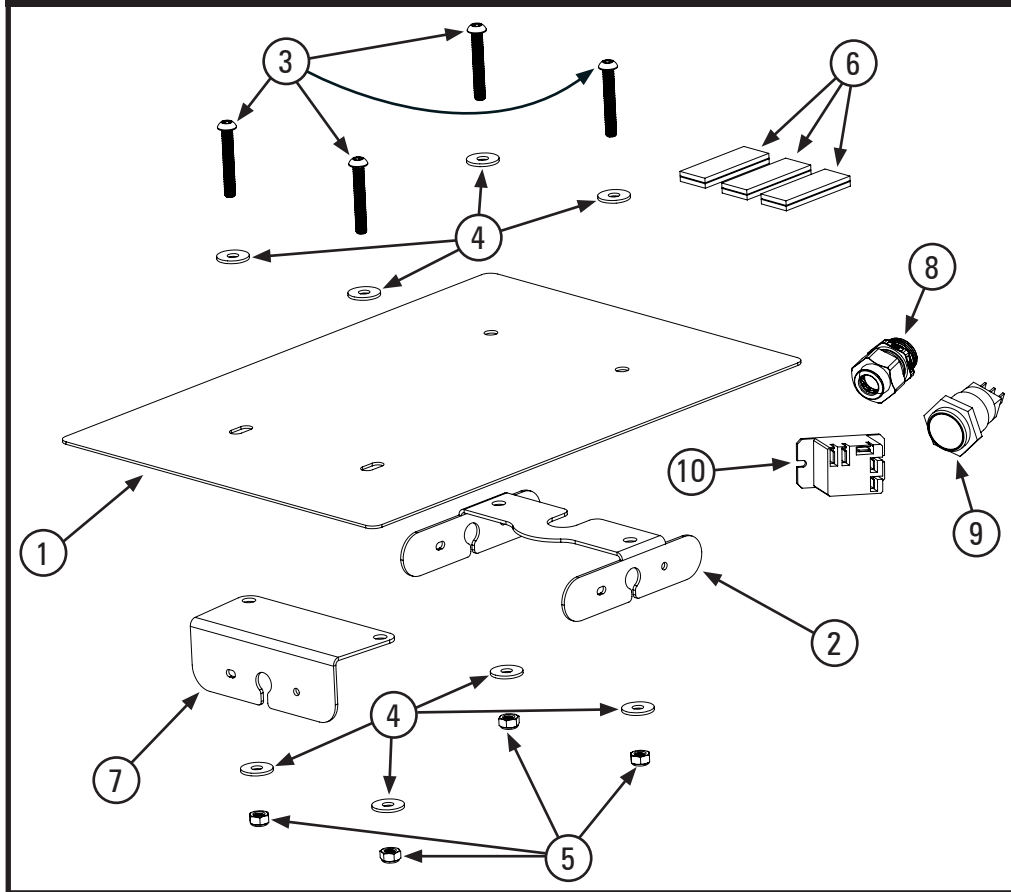
CONTENTS

#	QTY	COMPONENT
1	2	5/16" U BOLT
2	4	5/16" SPLIT LOCK WASHER
3	4	5/16" - 18 HEX NUT
4	1	SIREN / SPEAKER MOUNT BRACKET
5	4	M6 X 1.0 X 14MM HEX HEAD BOLT
6	4	M6 SPLIT LOCK WASHER
7	4	M6 FLAT WASHER

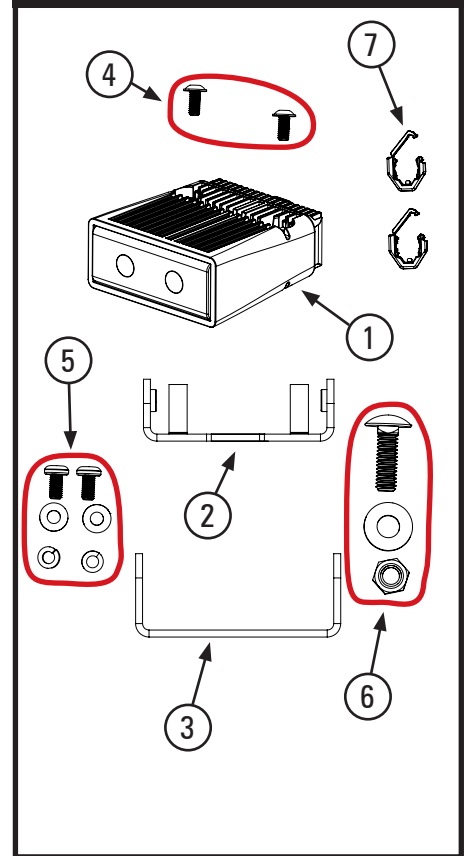
NOTICE:

Installers and users must comply with all applicable federal, state and local laws regarding use and installation of warning devices. Improper use or installation may void warranty coverage. To review our Limited Warranty Statement & Return Policy for this or any SoundOff Signal product, visit our website at www.soundoffsignal.com/tech-services/returns/. If you have questions regarding this product, contact **Technical Services**, Monday - Friday, 8 a.m. to 5 p.m. ET at 1.800.338.7337 (press #4). Questions or comments that do not require immediate attention may be emailed to techservices@soundoffsignal.com.

QKBCBK003 - REAR & SIDE MOUNT KIT



QKMPR10041-W - SPOT LIGHT KIT



CONTENTS

#	QTY	COMPONENT
1	1	BOX MOUNTING PLATE
2	1	REAR RACK SIDE LIGHT MOUNT BRACKET
3	4	TORX SCREW M6 X 1.00, 40MM
4	8	M6 FLAT WASHER
5	4	M6 NYLOCK NUTS
6	3	3M DUAL LOCK
7	1	REAR RACK REAR LIGHT MOUNT
8	1	WIRE PASS THROUGH GROMMET
9	1	PUSH BUTTON SWITCH
10	1	RELAY

CONTENTS

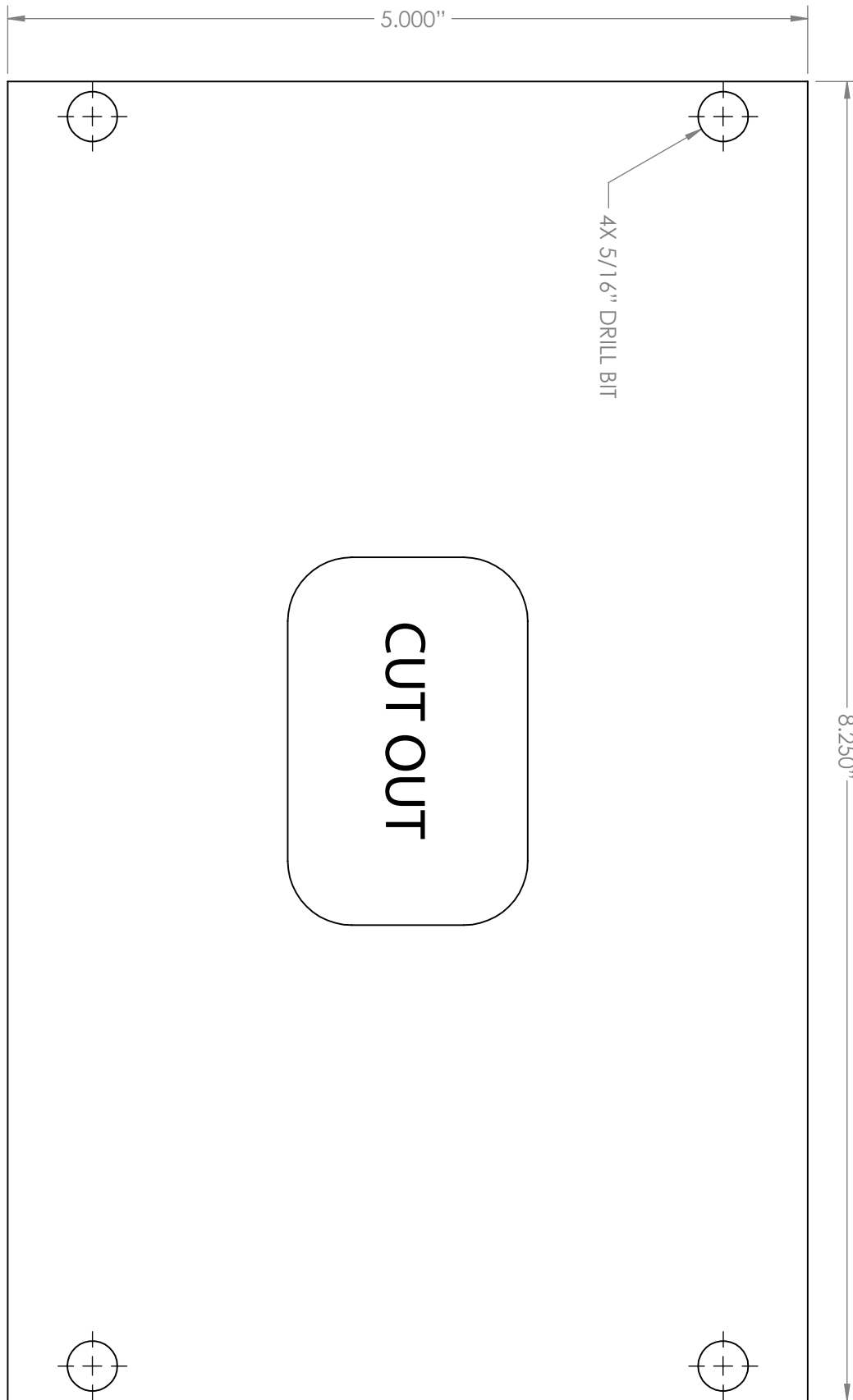
#	QTY	COMPONENT
1	1	2X1 HPS LIGHT MODULE
2	1	UPPER BAIL BRACKET
3	1	LOWER BAIL BRACKET
4	1	UPPER BAIL BRACKET HARDWARE KIT
5	1	UPPER TO LOWER BRACKET HARDWARE KIT
6	1	MAIN BRACKET MOUNTING HARDWARE KIT
7	2	WIRE RETAINING CLIPS

NOTICE:

Installers and users must comply with all applicable federal, state and local laws regarding use and installation of warning devices. Improper use or installation may void warranty coverage. To review our Limited Warranty Statement & Return Policy for this or any SoundOff Signal product, visit our website at www.soundoffsignal.com/tech-services/returns/. If you have questions regarding this product, contact **Technical Services**, Monday - Friday, 8 a.m. to 5 p.m. ET at 1.800.338.7337 (press #4). Questions or comments that do not require immediate attention may be emailed to techservices@soundoffsignal.com.



NOTE: PRINT THIS PAGE AT 100% SCALE

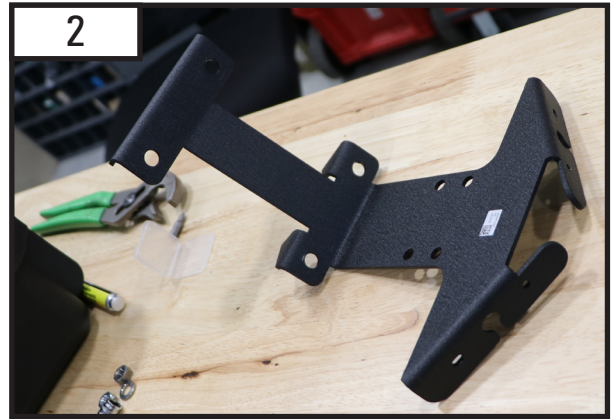


NOTICE:

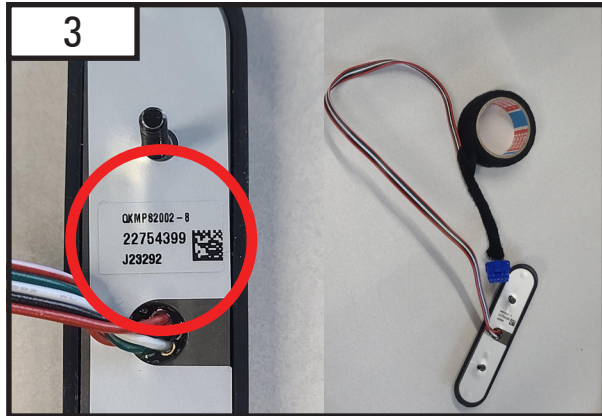
Installers and users must comply with all applicable federal, state and local laws regarding use and installation of warning devices. Improper use or installation may void warranty coverage. To review our Limited Warranty Statement & Return Policy for this or any SoundOff Signal product, visit our website at www.soundoffsignal.com/tech-services/returns/. If you have questions regarding this product, contact **Technical Services**, Monday - Friday, 8 a.m. to 5 p.m. ET at 1.800.338.7337 (press #4). Questions or comments that do not require immediate attention may be emailed to techservices@soundoffsignal.com.



1 Remove the battery from the bike's lower frame.



2 Grab front siren speaker bracket



3 Locate the part number on the bag or back side of the mPower for positioning. Tape all exposed wire with Tesa Tape.
QKMPS2001- LEFT SIDE
QKMPS2002- RIGHT SIDE
QKMPS2003 - REAR



4 Grab one left and one right mpower light. Mount the lights to the appropriate side of the siren speaker bracket called out in the image.



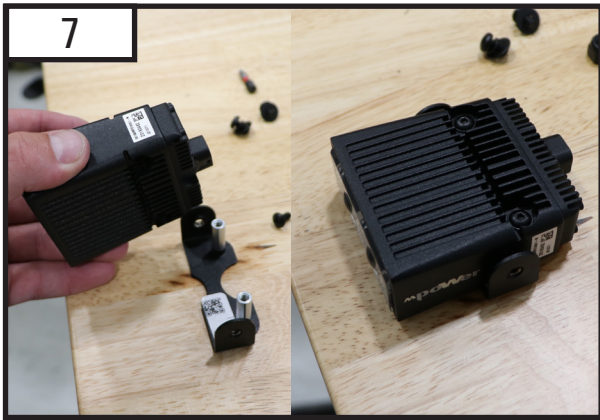
5 Now mount the siren speaker to the bracket, using the 4 bolts, 4 lock washers, and 4 washers provided in the siren speaker box.



6 Mount the mic clip to the mic bracket using the three rivets provided in the handlebar hardware kit.

NOTICE:

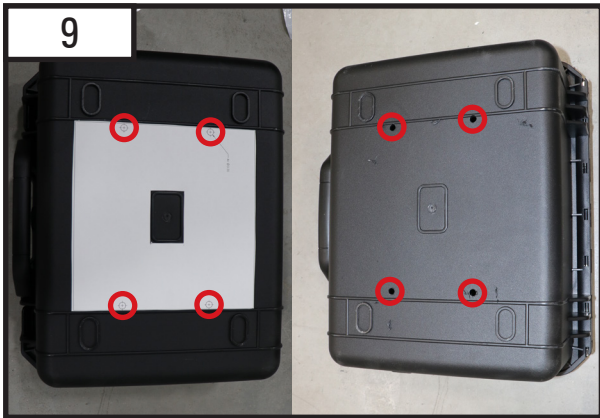
Installers and users must comply with all applicable federal, state and local laws regarding use and installation of warning devices. Improper use or installation may void warranty coverage. To review our Limited Warranty Statement & Return Policy for this or any SoundOff Signal product, visit our website at www.soundoffsignal.com/tech-services/returns/. If you have questions regarding this product, contact **Technical Services**, Monday - Friday, 8 a.m. to 5 p.m. ET at 1.800.338.7337 (press #4). Questions or comments that do not require immediate attention may be emailed to techservices@soundoffsignal.com.



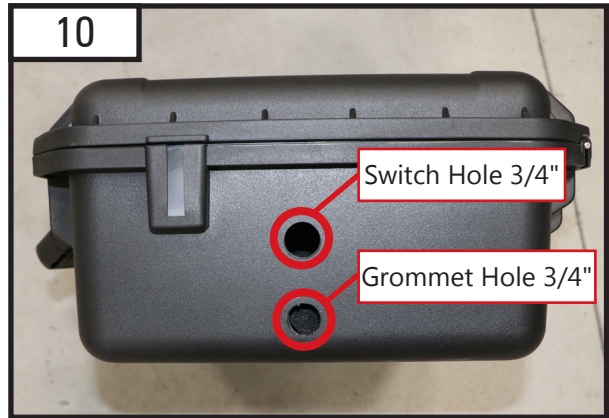
7 Prep the 2x1 HPS by attaching the upper bail bracket to the light using the provided hardware.



8 Grab rear brackets and mount the lights to the appropriate location called on the brackets in the image.



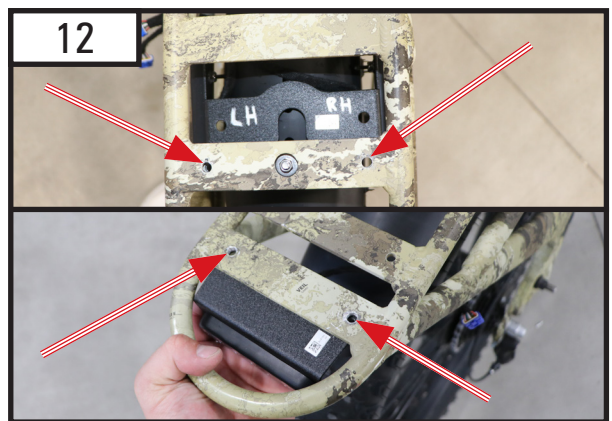
9 Use the drill template found on page 5. Place drill template on the back side of the box and drill out the four holes specified.



10 On the "front" side of the box, drill out two holes for the ignition switch and a wire pass through.



11 Install the switch in the upper hole and wire pass through grommet in the bottom hole.



12 Place rear brackets in correct places / Arrows indicate what holes to use when mounting

NOTICE:

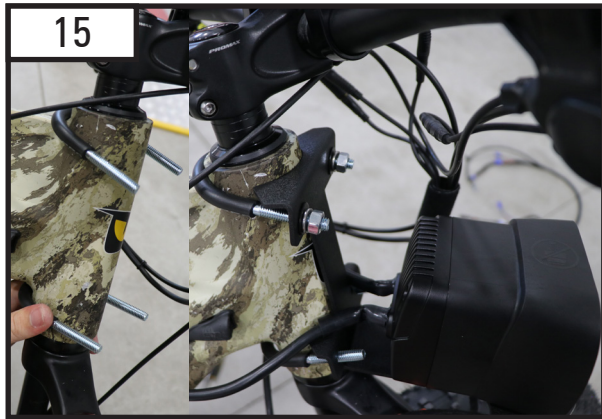
Installers and users must comply with all applicable federal, state and local laws regarding use and installation of warning devices. Improper use or installation may void warranty coverage. To review our Limited Warranty Statement & Return Policy for this or any SoundOff Signal product, visit our website at www.soundoffsignal.com/tech-services/returns/. If you have questions regarding this product, contact **Technical Services**, Monday - Friday, 8 a.m. to 5 p.m. ET at 1.800.338.7337 (press #4). Questions or comments that do not require immediate attention may be emailed to techservices@soundoffsignal.com.



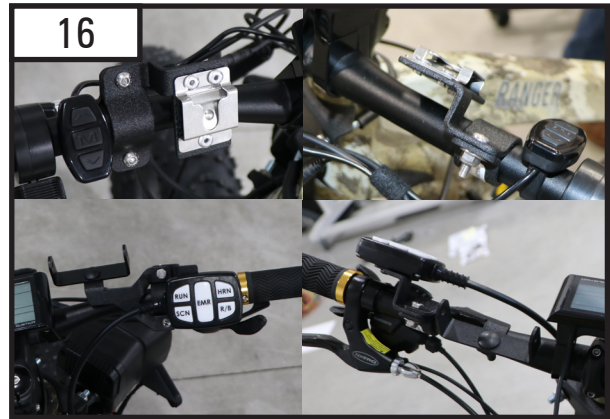
13 Place box on top of the rack, insert the internal reinforcement plate. Push bolts through the plate, box and rack with supplied hardware.



14 Line up light brackets and slide onto bolts. Tighten bolts once box is correctly aligned.



15 Mount Front main bracket with U Mounts and bolts.



16 Mount the Left handlebar mount (Mic Mount) and Right handlebar mount (Controller and 2x1 HPS) to handlebars. **NOTE: The 5 button controller will need to be mounted to bracket before mounting bracket to handle bar.**



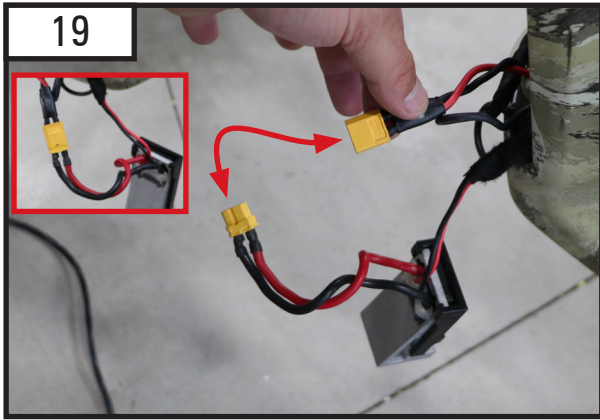
17 Mount 2x1 HPS to the right hand bracket with the bail bracket already installed. Use the hardware provided with the 2x1 HPS kit.



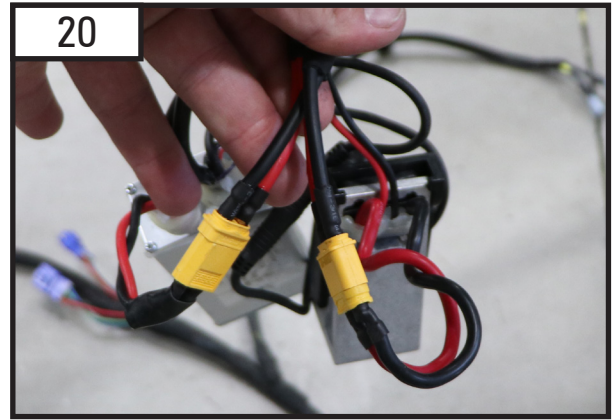
18 Remove the bikes 48v battery bottom mounting bolts (3x 3mm allen)

NOTICE:

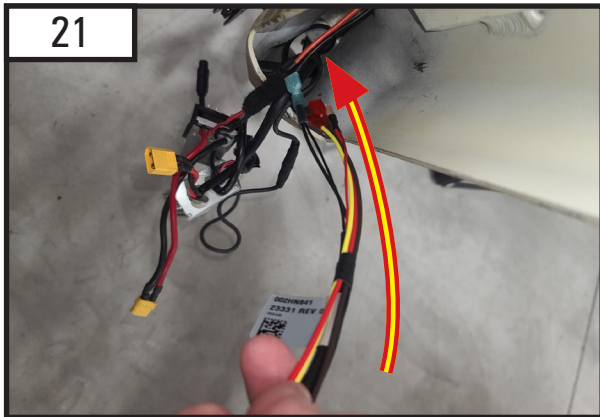
Installers and users must comply with all applicable federal, state and local laws regarding use and installation of warning devices. Improper use or installation may void warranty coverage. To review our Limited Warranty Statement & Return Policy for this or any SoundOff Signal product, visit our website at www.soundoffsignal.com/tech-services/returns/. If you have questions regarding this product, contact **Technical Services**, Monday - Friday, 8 a.m. to 5 p.m. ET at 1.800.338.7337 (press #4). Questions or comments that do not require immediate attention may be emailed to techservices@soundoffsignal.com.



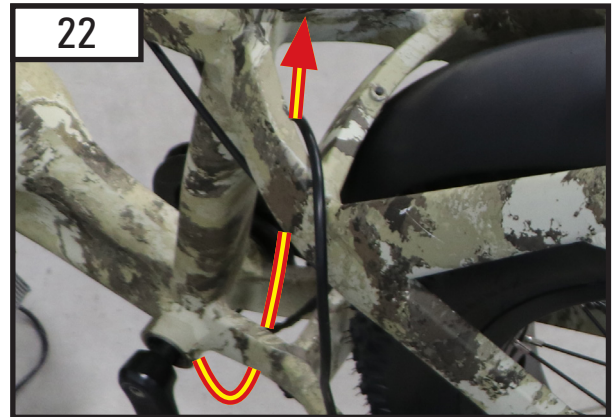
19 Pull out the 48v battery connector and disconnect the yellow power plug.



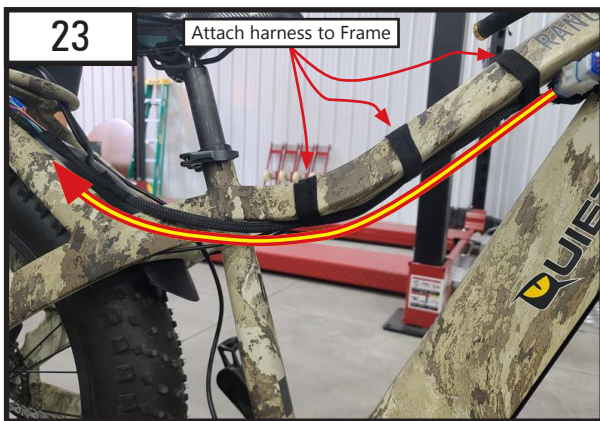
20 Pull out the bike's power converter and disconnect the two yellow connectors. Take the 48V Power harness and attach to the disconnected plugs on the bike.



21 Take the harness end with the terminals and run the wires inside the frame and out the bottom.



22 Run the 48V power harness up the frame towards the mounted black case.



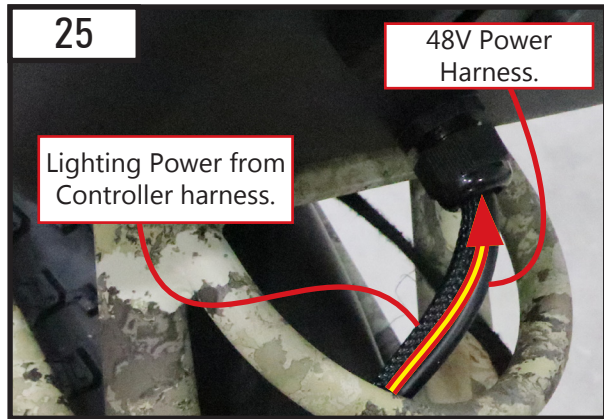
23 Attach and run the vehicle harness along the frame and connect the lights and controller. Use Tesa tape on the frame to secure the harness.



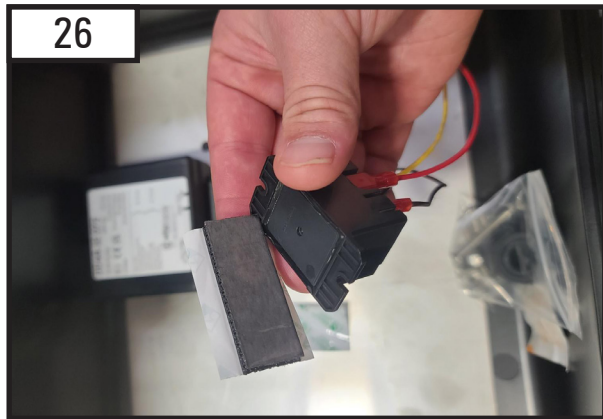
24 Connect the rear lights making sure the longest blue connector is attached to the rear facing light. Ensure the cables are ran on the inner side of the bike frame so they are protected.

NOTICE:

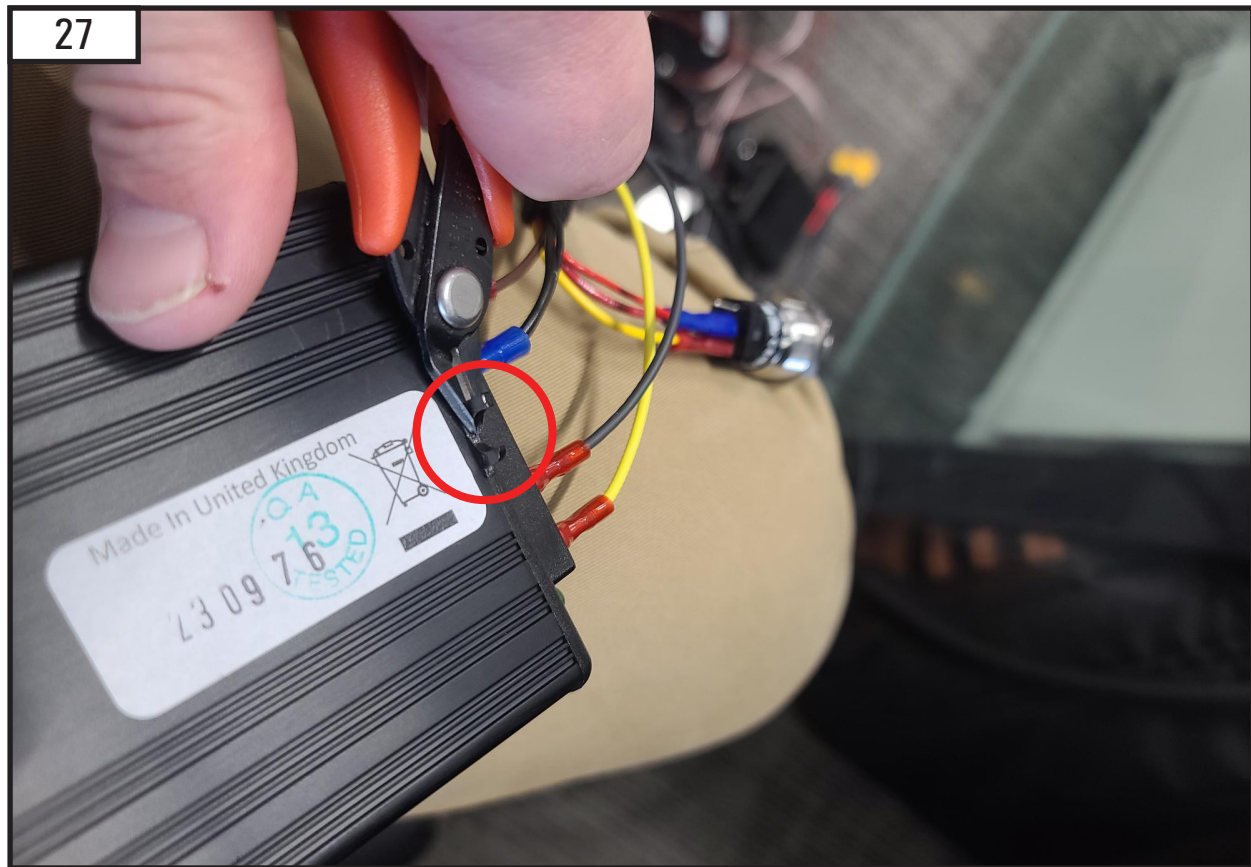
Installers and users must comply with all applicable federal, state and local laws regarding use and installation of warning devices. Improper use or installation may void warranty coverage. To review our Limited Warranty Statement & Return Policy for this or any SoundOff Signal product, visit our website at www.soundoffsignal.com/tech-services/returns/. If you have questions regarding this product, contact **Technical Services**, Monday - Friday, 8 a.m. to 5 p.m. ET at 1.800.338.7337 (press #4). Questions or comments that do not require immediate attention may be emailed to techservices@soundoffsignal.com.



Run the power wires into the wire pass through grommet. Make sure to run cables through the external clamp first so it can slide over the grommet and screw on.



Clean off surface of relay and converter with the alcohol prep wipe. Take one of the dual lock pieces and stick to the bottom of the relay and put in desired position. Do the same steps for the converter as well.

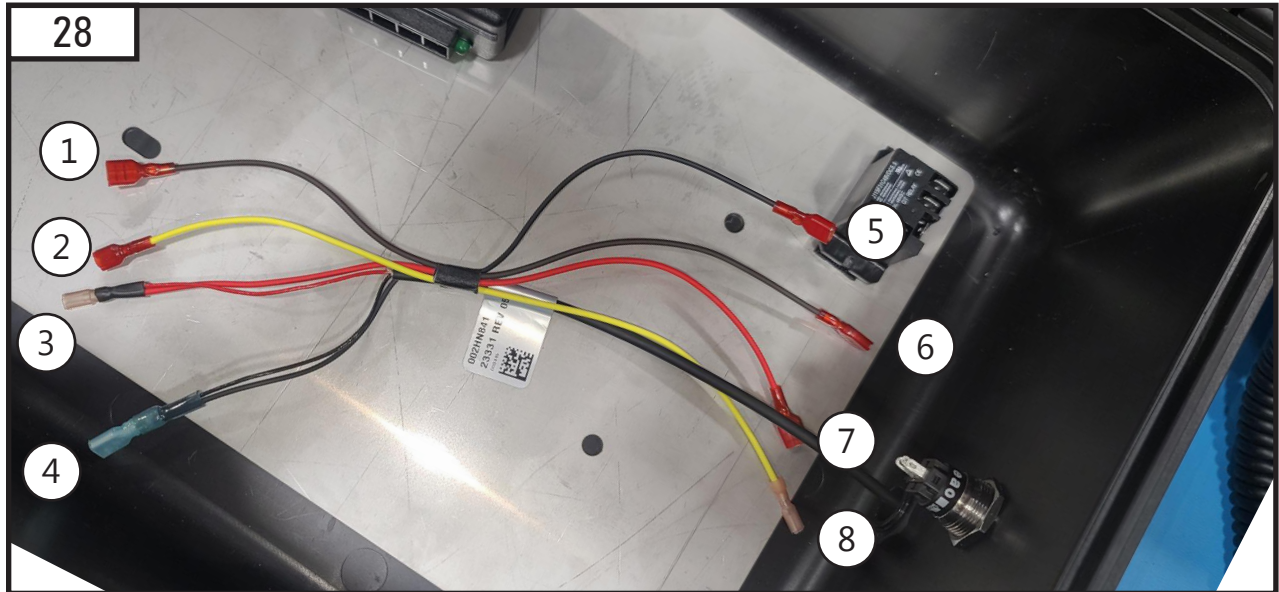


Pop off the plastic mounting piece on the converter and clip off metal tab on underside before mounting.

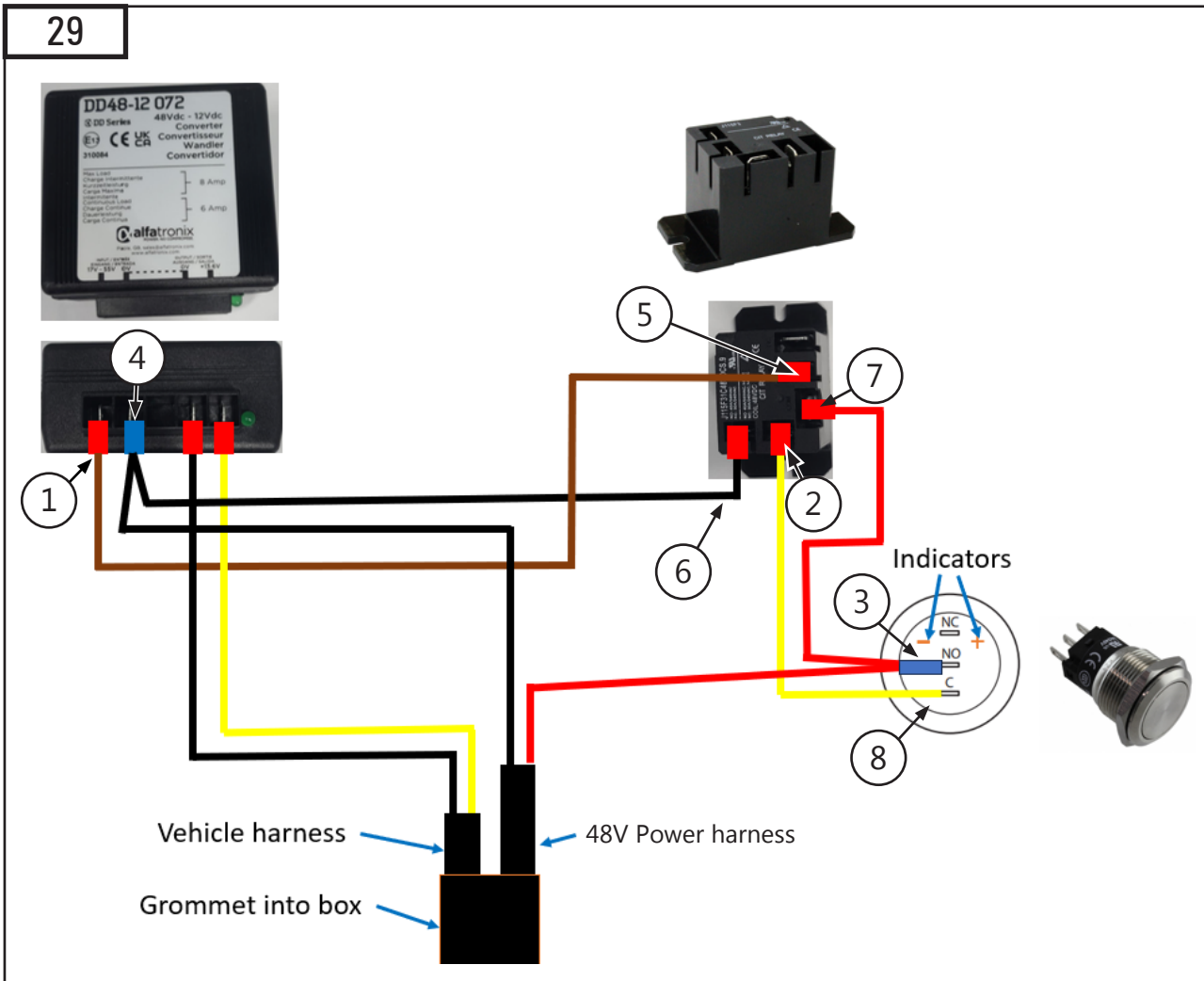
NOTICE:



Installers and users must comply with all applicable federal, state and local laws regarding use and installation of warning devices. Improper use or installation may void warranty coverage. To review our Limited Warranty Statement & Return Policy for this or any SoundOff Signal product, visit our website at www.soundoffsignal.com/tech-services/returns/. If you have questions regarding this product, contact **Technical Services**, Monday - Friday, 8 a.m. to 5 p.m. ET at 1.800.338.7337 (press #4). Questions or comments that do not require immediate attention may be emailed to techservices@soundoffsignal.com.



Only the 48V power harness is shown. Use the numbers on images above and below to make the correct connections inside the box. After the installation of the 48V power harness is complete, hook the vehicle harness up to the converter as shown in the image below.



NOTICE:

Installers and users must comply with all applicable federal, state and local laws regarding use and installation of warning devices. Improper use or installation may void warranty coverage. To review our Limited Warranty Statement & Return Policy for this or any SoundOff Signal product, visit our website at www.soundoffsignal.com/tech-services/returns/. If you have questions regarding this product, contact **Technical Services**, Monday - Friday, 8 a.m. to 5 p.m. ET at 1.800.338.7337 (press #4). Questions or comments that do not require immediate attention may be emailed to techservices@soundoffsignal.com.



Before pushing in the switch to activate the system ensure the converter is connected as shown above.



Before pushing in the switch to activate the system ensure the relay is connected as shown above.

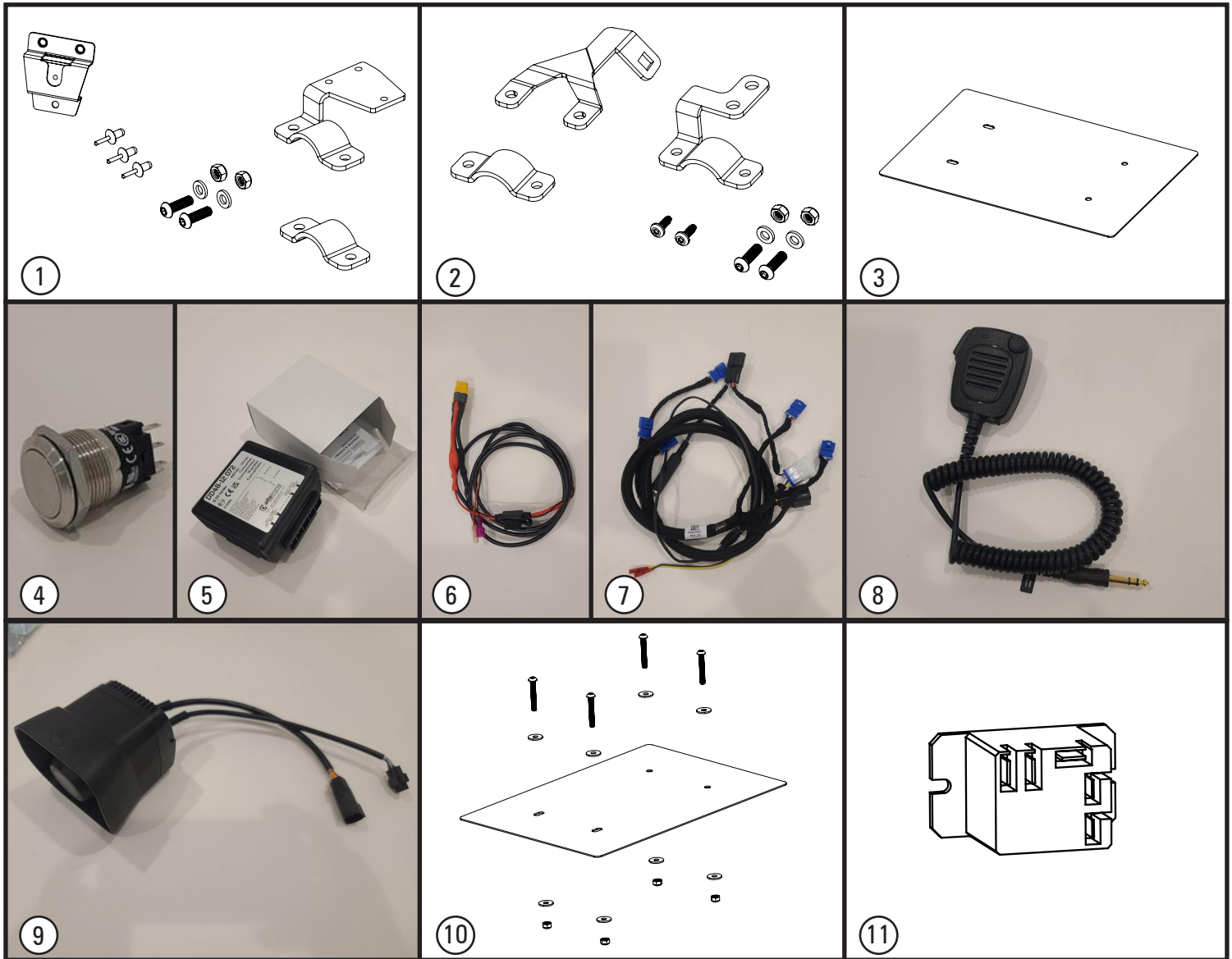


Once all steps are completed turn on switch and test unit.

NOTICE:

Installers and users must comply with all applicable federal, state and local laws regarding use and installation of warning devices. Improper use or installation may void warranty coverage. To review our Limited Warranty Statement & Return Policy for this or any SoundOff Signal product, visit our website at www.soundoffsignal.com/tech-services/returns/. If you have questions regarding this product, contact **Technical Services**, Monday - Friday, 8 a.m. to 5 p.m. ET at 1.800.338.7337 (press #4). Questions or comments that do not require immediate attention may be emailed to techservices@soundoffsignal.com.

QUIETKAT LIGHTING KIT



SERVICE PARTS

#	PART NUMBER	DESCRIPTION	WARRANTY
1	QKBCBK004	QUIETKAT EV BIKE HANDLEBAR KIT LH	1 YEAR
2	QKBCBK005	QUIETKAT EV BIKE HANDLEBAR KIT RH	1 YEAR
3	QKBCBK006	QUIETKAT EV BIKE BOX SUPPORT PLATE	1 YEAR
4	QKBCSW001	QUIETKAT EV BIKE WATERPROOF SWITCH	1 YEAR
5	QKBCEA001	QUIETKAT EV BIKE CONVERTOR	1 YEAR
6	QKBCHN002	QUIETKAT EV BIKE FUSE HARNESS	2 YEAR
7	QKBCHN001	QUIETKAT EV BIKE HARNESS	2 YEAR
8	QKBMC001	QUIETKAT EV BIKE MICROPHONE	2 YEAR
9	QKBCSR001	QUIETKAT EV BIKE SIREN W/ AMP	2 YEAR
10	QKBCHK001	QUIETKAT EV BIKE BOX SUPPORT PLATE HARDWARE KIT	2 YEAR
11	QKBCRL001	QUIETKAT EV BIKE REPLACEMENT RELAY KIT	2 YEAR

NOTICE:

Installers and users must comply with all applicable federal, state and local laws regarding use and installation of warning devices. Improper use or installation may void warranty coverage. To review our Limited Warranty Statement & Return Policy for this or any SoundOff Signal product, visit our website at www.soundoffsignal.com/tech-services/returns/. If you have questions regarding this product, contact **Technical Services**, Monday - Friday, 8 a.m. to 5 p.m. ET at 1.800.338.7337 (press #4). Questions or comments that do not require immediate attention may be emailed to techservices@soundoffsignal.com.



WARRANTY & RETURN GOODS PROCEDURE

WARNING MESSAGES - PLEASE READ: _____

WARNING - DRILLING ANY HOLES INTO THE CONVERTOR, SIREN, CONTROLLER OR MIC IS NOT RECOMMENDED! THE RISK OF DAMAGING INTERNAL COMPONENTS AND THE RESULTING FAILURE OF THE ITEM(S) WILL VOID ANY WARRANTY OF THIS PRODUCT.

WARNING - CARE MUST BE TAKEN WHEN DRILLING THROUGH THE VEHICLE NOT TO DRILL INTO ANY EXISTING WIRING AND CHECK BOTH SIDES OF THE MOUNTING SERVICE PRIOR TO DRILLING. DE-BURR ANY HOLES AND REMOVE ANY METAL SHARDS OR REMNANTS. INSTALL GROMMETS INTO ALL WIRE PASSAGE HOLES.

WARNING - ROUTE WIRES ONLY IN LOCATIONS THAT ARE NOT SUBJECTED TO POTENTIAL WEAR.

WARNING-ALL CUSTOMER SUPPLIED POWER WIRES CONNECTING TO THE POSITIVE (+) OR NEGATIVE (-) BATTERY TERMINAL OR LOCAL CHASSIS GROUND (-) MUST BE SIZED TO SUPPLY AT LEAST 125% OF THE MAXIMUM CURRENT AND PROPERLY FUSED AT THE POWER SOURCE WITH APPROPRIATELY RATED FUSE.

WARRANTY FORFEITURE:

Warranty will not be granted if the Warranty Return Policy & Procedure rules are not strictly followed. Physical damage resulting from customer abuse will void warranty. Warranty will also be voided if any SoundOff Signal and/or manufacturer serial tags, product stickers, seals, or the like, are removed, altered or tampered with. Returned product that is damaged by shipping via the RMA # procedure is not the responsibility of SoundOff Signal.

Document effective date on cover and below supersedes previously dated policies and statements.

There are no other warranties, expressed or implied, including, but not limited to, any implied merchantability or fitness for a particular use. SoundOff Signal reserves the right to modify this warranty statement at any time; or to discontinue, modify, or upgrade any products of its manufacture with design improvements without prior notice.

WARRANTY RETURN PROCESS:



Please scan QR code or visit <https://soundoffsignal.com/support-page/returns/>.

Alternatively contact your SoundOff Signal Sales Representative, Customer Services staff or our Technical Department (800.338.7337) for a RMA #, Return Merchandise Authorization Number.

The following information is required for issuance of the RMA #:

- Reason for returning the product*
- Address where replacement product is to be shipped*
- Telephone number where you may be reached*
- SoundOff Signal invoice number on which product was purchased**
- SoundOff Signal part number and serial number**
- E-mail address where RMA # should be e-mailed**
- Fax number where RMA # should be faxed**

* RMA # will not be given without this information.
 ** If available, please provide this information.

SoundOff Signal will NOT accept returns without an RMA #. Each RMA # is good for only one (1) return and will expire (30) days after the date it was issued. Products must be shipped back to SoundOff Signal and the RMA # clearly marked on the outside of the package near the shipping label. Please use the following address on your shipping label:

SoundOff Signal
 ATTN: RMA # / Technical Services
 3900 Central Parkway
 Hudsonville, MI 49426

WARRANTY EXCLUSIONS:

Shipping & Handling, labor and service fees are non-refundable. SoundOff Signal is not liable for any damage due to installation or personal injury as a result of using SoundOff Signal product.

NOTICE:

Installers and users must comply with all applicable federal, state and local laws regarding use and installation of warning devices. Improper use or installation may void warranty coverage. To review our Limited Warranty Statement & Return Policy for this or any SoundOff Signal product, visit our website at www.soundoffsignal.com/tech-services/returns/. If you have questions regarding this product, contact **Technical Services**, Monday - Friday, 8 a.m. to 5 p.m. ET at 1.800.338.7337 (press #4). Questions or comments that do not require immediate attention may be emailed to techservices@soundoffsignal.com.

